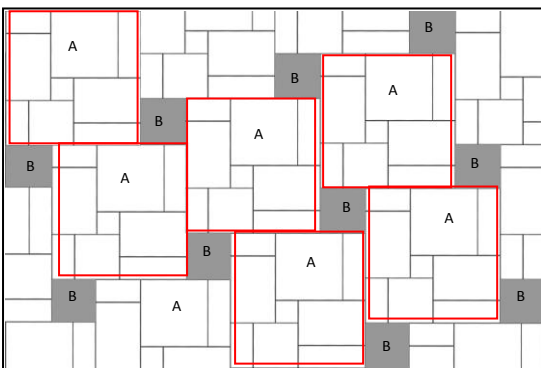


## Random Panel Installation Guide

Random Panels are supplied as standard panels, each panel comprising nine assorted tile sizes, design strips and one additional 12x12" (305x305mm) tile. The box contains four panels taped together, plus four 12x12" tiles (305x305mm) and 4 additional design strips, each 24" in length (610mm). The following instructions must be followed to ensure that the floor is laid successfully, and the appearance reflects the random look of a natural tile product.

### Installation Notes

- The random panels must be acclimatised before installation. Remove panels from all packaging, spread out and allow to condition in the room where installation is to take place at a constant temperature of 18-26°C or (65°-79°F) for a period of 24 hours prior to installation. This temperature should be maintained during installation, and for a 24 hour period after installation.
- Panels should be laid in a uniform direction to ensure a consistently repeated pattern.
- Panels must be wet-set into adhesive.
- The plastic film fixed to the face of the panel should be left attached until the panel has been installed otherwise break-up of the panel can occur.
- It is essential that the layout diagram is followed:



A = Large Panel 36x36" (915x915mm)  
B = 12x12" (305x305mm) tile

### Sub-Floor Preparation

- Consult our Tile and Plank Installation Guide as provided.

### Adhesives

- Panels must be laid using a wet-set adhesive.
- If laying on a non porous surface please call for guidance.

#### Adhesive Trowel Sizes UK/Europe

Random panels require adhesive to be spread using a European standard A2 trowel.

Specific use of an A2 trowel will allow for improved adhesive spread across the sub-floor, ensuring better adhesion of the tiles to the floor.

#### Adhesive Trowel Sizes USA

Porous Subfloors – 1/16 D x 1/16 W x 1/16 A  
Square Notch

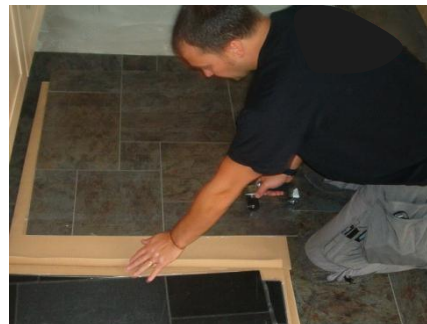
Non Porous Subfloors – 1/16 D x 1/32 W x 1/16 A  
V Notch

### Installation of Full and Straight-Cut Panels



#### Step 1

Measure and mark out onto the sub-floor, the position of the first panel in the centre of the room.



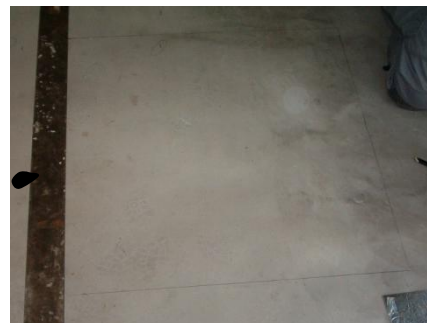
#### Step 2

Ensure the plastic film is firmly attached to the face of the panel using a hand roller.



#### Step 3

Slide the panel off the box using its lid and into position on the sub-floor.



#### Step 4

Mark the sub-floor around the perimeter of the panel and slide the panel back onto the lid of the box.



#### Step 5

Apply the adhesive onto the sub-floor using the relevant trowel (see opposite), keeping within the perimeter of the panel as previously marked.



## Random Panel Installation Guide



**Step 6**  
Slide the panel into position on the sub-floor.



**Step 7**  
Carefully remove the plastic film from the panel at an acute angle.



**Step 8**  
Using a hand roller, roll over the panel to ensure good adhesion to the sub-floor.

### Installation of Panels to be shaped

Due to the make-up of the panels, individual tiles and strips can be removed to allow for shaping of the panel. You must ensure that tiles removed for shaping are replaced in the same position as supplied.



**Step 1**  
Remove the tiles and strips from the panel that will require shaping, and install the remainder of the panel following the instructions shown overleaf.



**Step 2**  
Shape tiles and strips as required and dry-fit these to ensure a correct fit. Apply adhesive to the floor and install tiles and strips individually, ensuring they are replaced in the same position as originally supplied on the full panel.

### After Installation

The floor should be rolled with a 68kg or (100lb) roller in large areas, or a small hand roller in lesser areas.

The floor should be left free from general traffic for 24 hours following installation or protected from direct contact for that period, i.e. boarded over.

For further assistance about the installation of Random panels, please contact:

UK 01386 820200  
USA 1-888-266-4343  
Australia 03 9763 5588

Issue  
September 2010